

TEXAS WATER RESOURCES INSTITUTE

**Continued Watershed Protection Plan
Implementation Projects, FY26:
Attoyac Bayou and La Nana Bayou**

**Alexander Neal,
Program Specialist II**

Continuation of the Attoyac Bayou Watershed Protection Plan Implementation

Funded by the Clean Water Act §319(h) Nonpoint Source Grant Program of the Texas State Soil and Water Conservation Board.

Expected project duration: September 1, 2025 – August 31, 2028

-Continuation of the WPP to be facilitated by TWRI, ANRA, Stephen F Austin State University, and Pineywoods Resource Conservation & Development

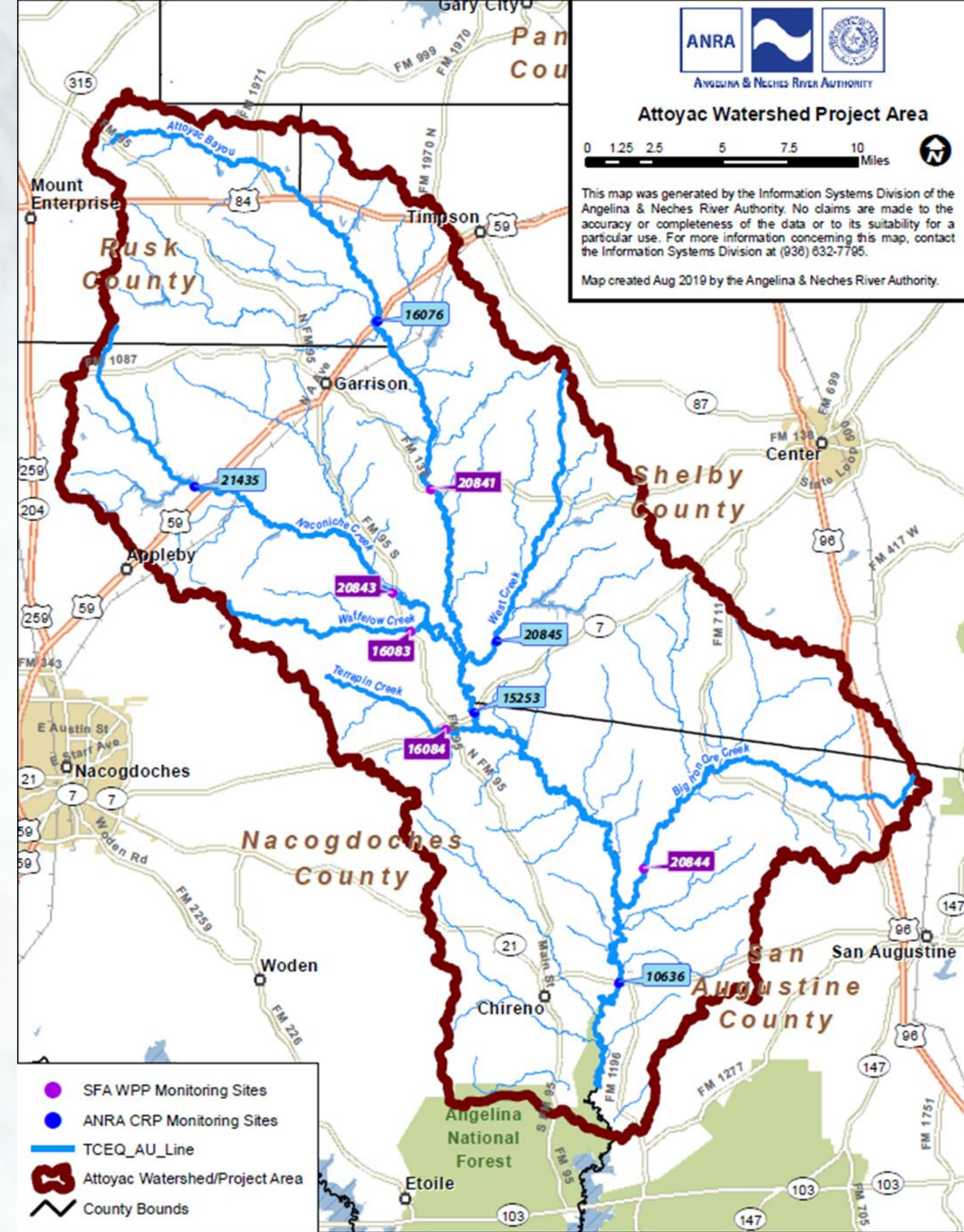
-Implementation will be supported by:

- Continued surface water quality monitoring
- Adaptive outreach and education strategies
- Providing info to watershed residents on the implementation of BMPs

Attoyac Bayou Watershed Protection Plan Implementation – Surface Water Quality Monitoring

Project location: Attoyac Bayou watershed upstream of Sam Rayburn Reservoir in San Augustine, Nacogdoches, Shelby and Rusk counties

Bacteria impairments: Attoyac Bayou (Segments 0612_01, 0612_02, 0612_03) and West Creek (Segment 0612F)



Attoyac Bayou Watershed Protection Plan Implementation – Surface Water Quality Monitoring by ANRA

Supporting monitoring, intended to support existing CRP monitoring:

Quarterly monitoring to be conducted by ANRA staff (to include ammonia-N, nitrate-N, nitrite-N, Total P, Total Suspended Solids, Total, Chloride, Sulfate, and E. coli):

- 10636 – Attoyac Bayou at SH 21
- 15253 – Attoyac Bayou at SH 7
- 16076 – Attoyac Bayou at US 59
- 20845 – West Creek at FM 2913

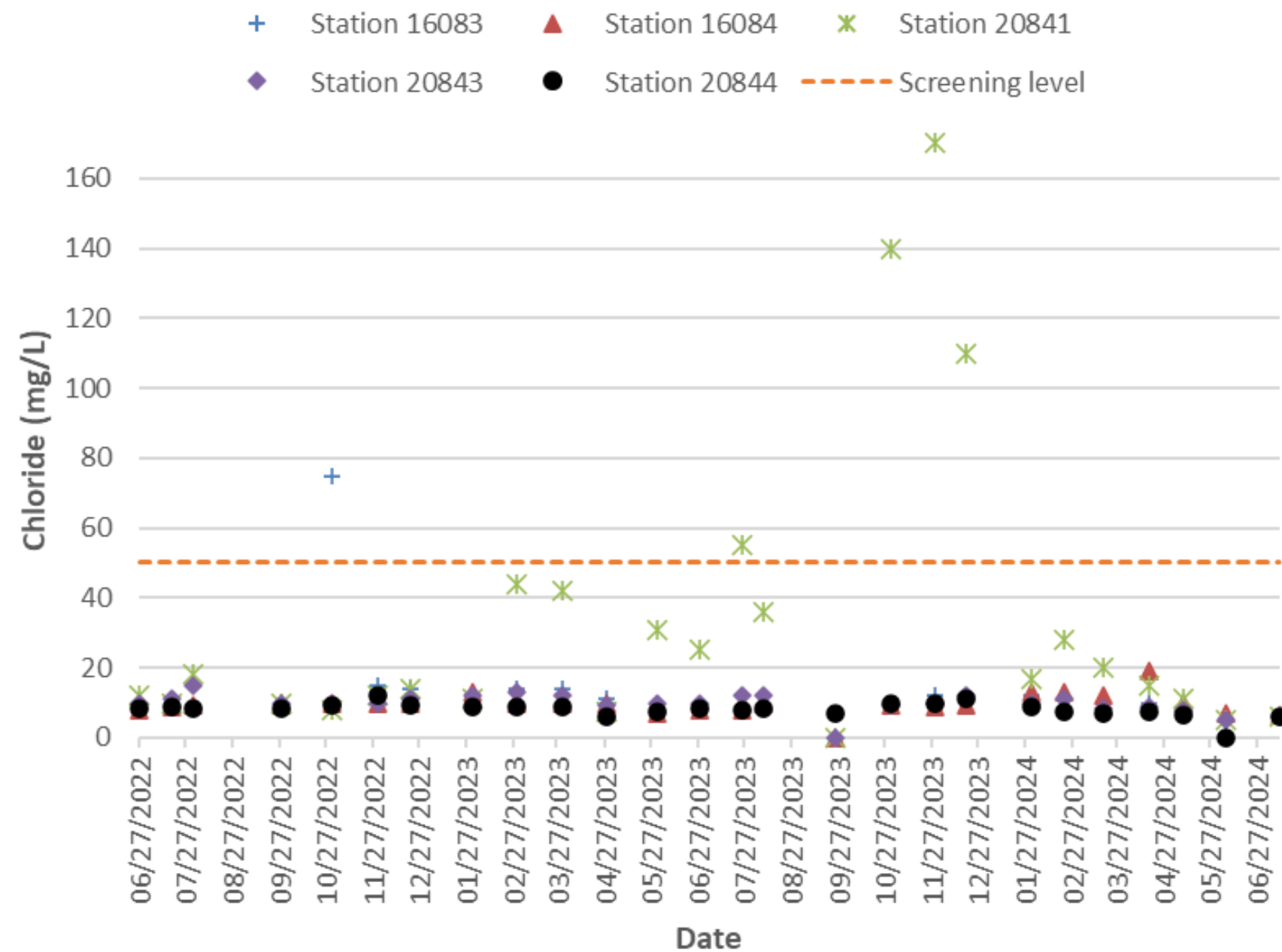
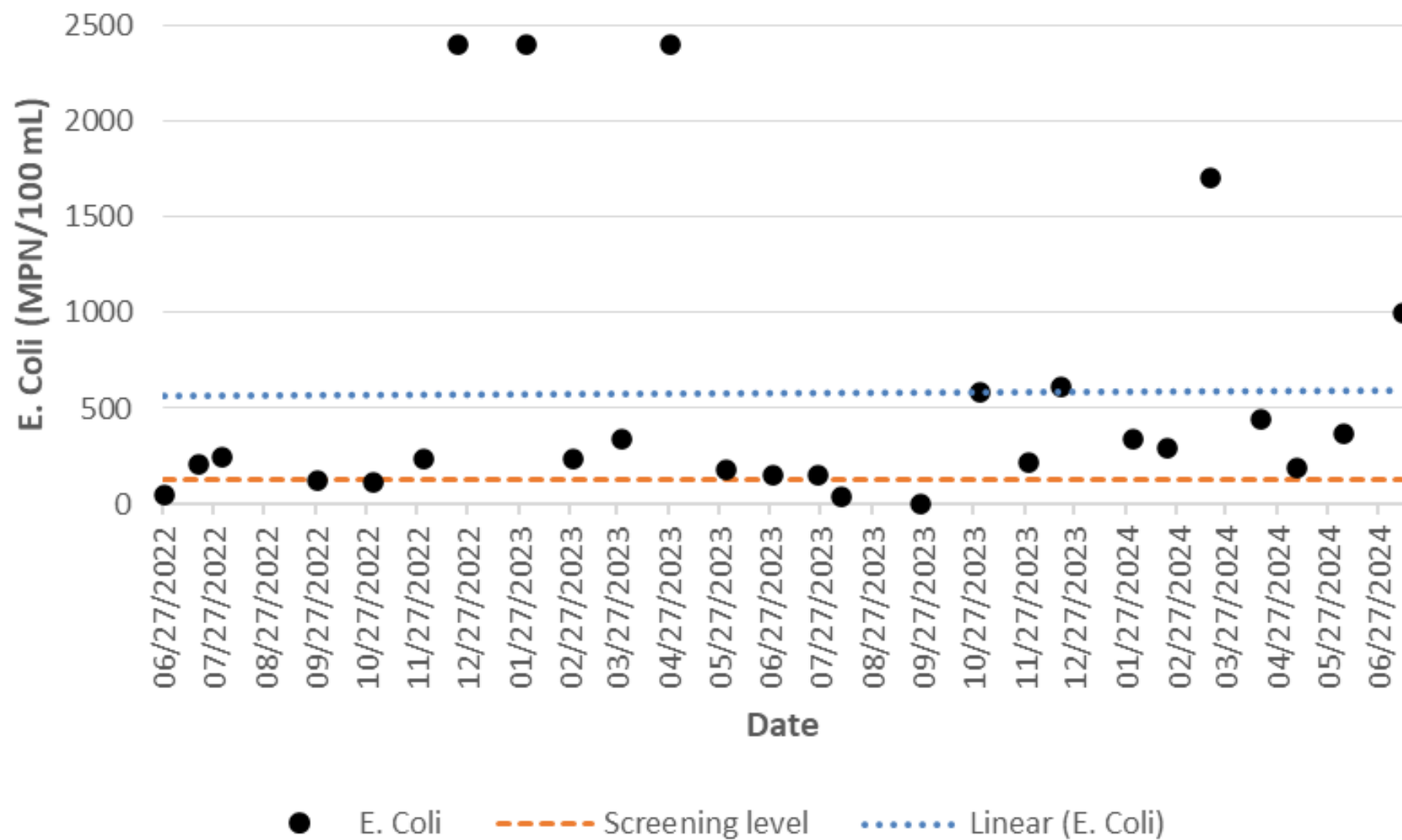
Attoyac Bayou Watershed Protection Plan Implementation – Surface Water Quality Monitoring by SFASU

Supporting monitoring, intended to support existing CRP monitoring:

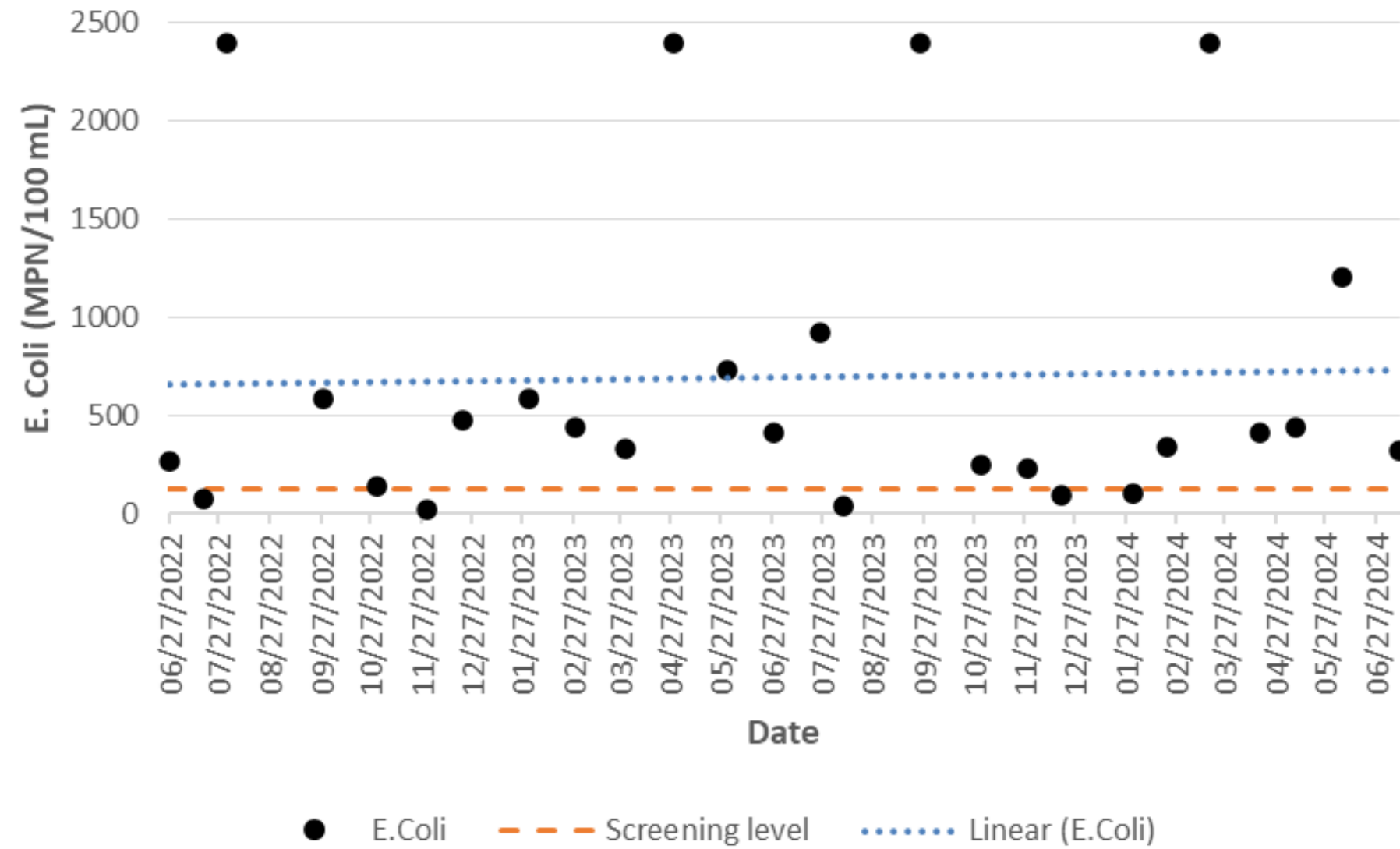
Monthly monitoring to be conducted by SFASU staff (to include ammonia-N, nitrate-N, nitrite-N, Total P, Total Suspended Solids, Total, Chloride, Sulfate, and E. coli)

- 20841 – Attoyac Bayou at FM 138
- 20843 – Naconiche Creek at FM 95
- 16083 – Wafflelow Creek at FM 95
- 16084 – Terrapin Creek at FM 95
- 20844 – Big Iron Ore Creek at FM 354
- or 21435 – Naconiche Lake near the dam

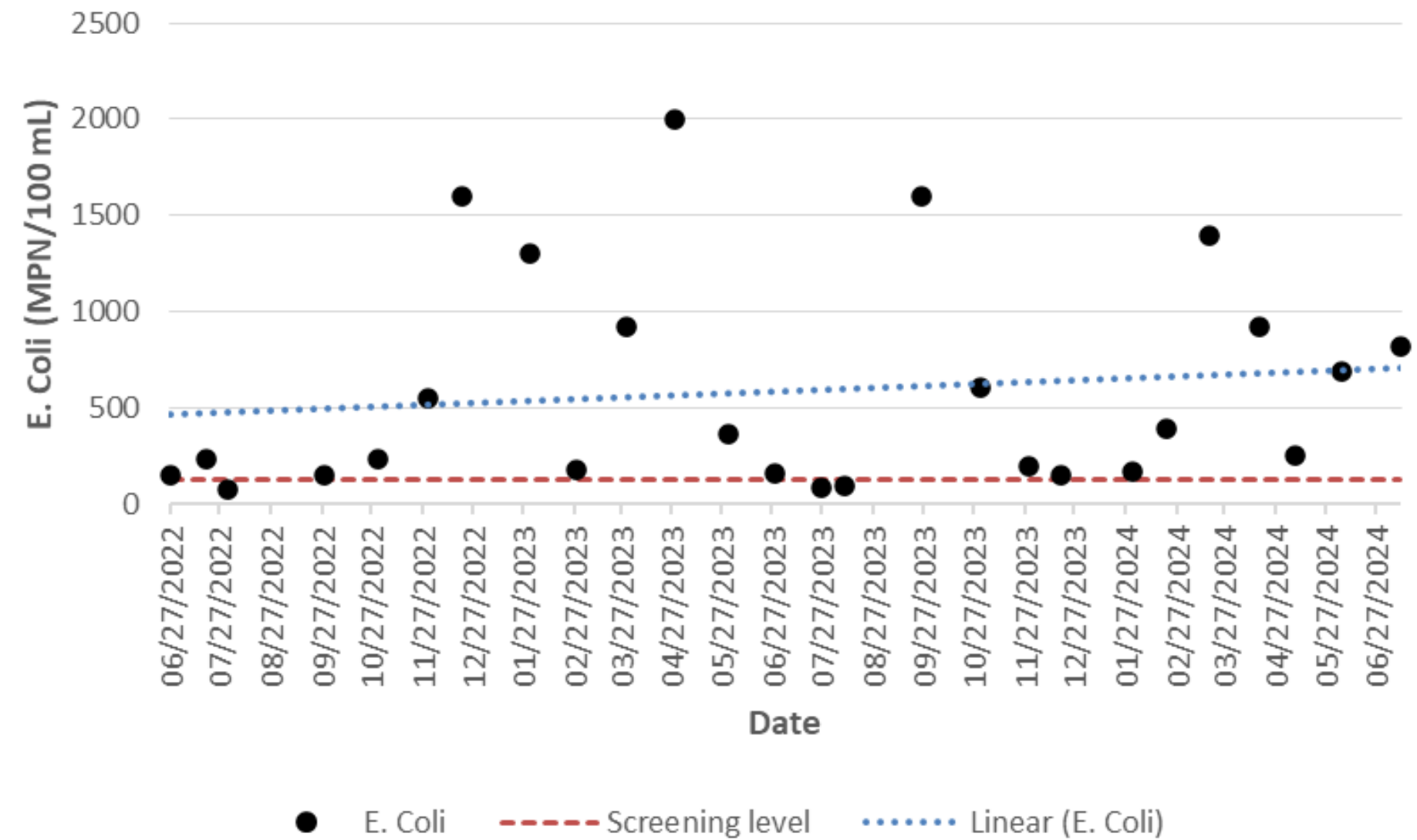
Attoyac at FM 138, Station 20841



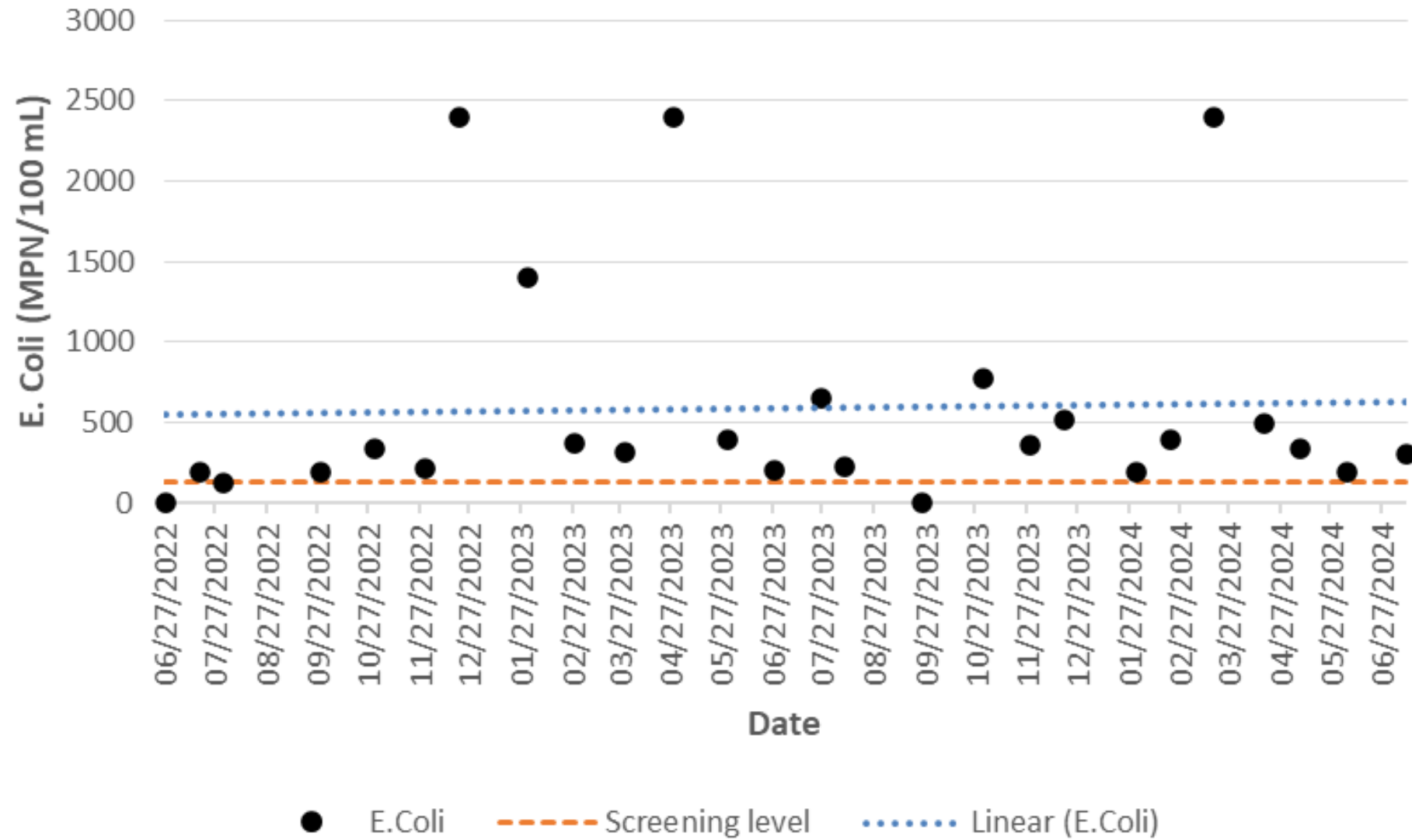
Waffelow Creek at FM 95, Station 16083



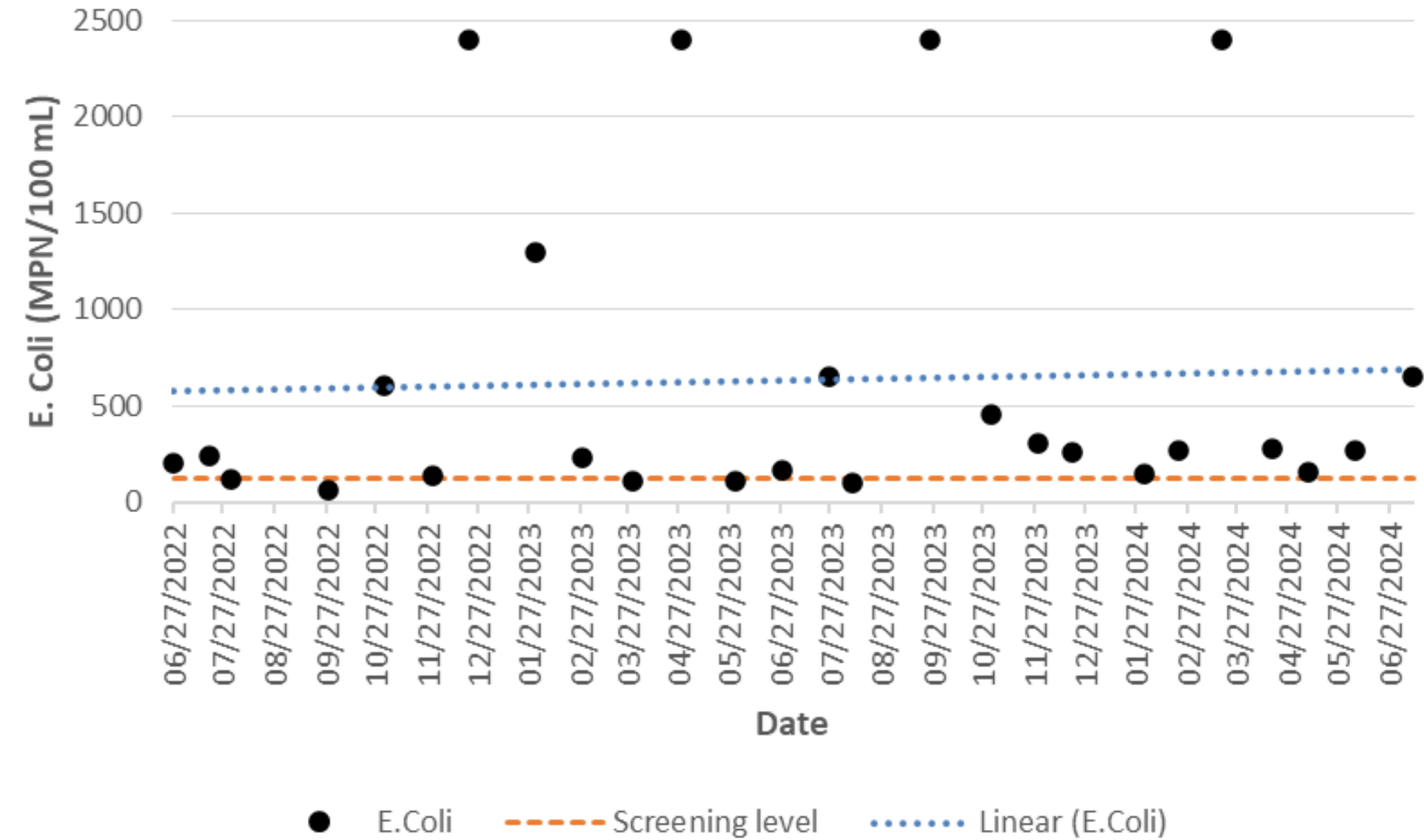
Terrapin Creek at FM 95, Station 16084



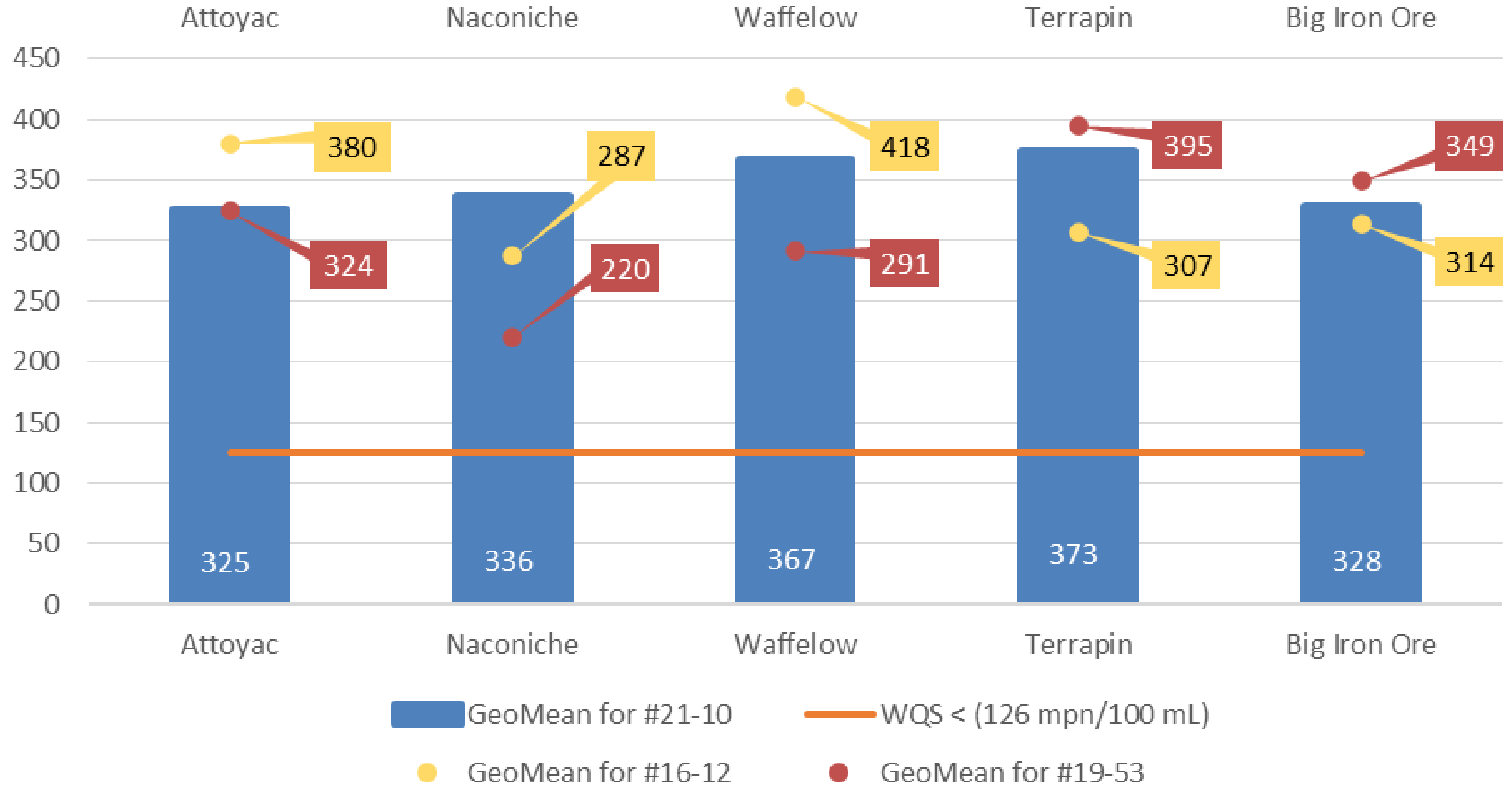
Big Iron Ore Creek at FM 354, Station 20844



Naconiche Creek at FM 95, Station 20843



Geomean for *E. Coli* (mpn/100 mL)



Continuation of the La Nana Bayou Watershed Protection Plan Implementation

Funded by the Clean Water Act §319(h) Nonpoint Source Grant Program of the Texas State Soil and Water Conservation Board.

Expected project duration: December 2, 2024 – November 30, 2026

-Continuation of the WPP to be facilitated by TWRI, ANRA and SFASU

-Implementation will be supported by:

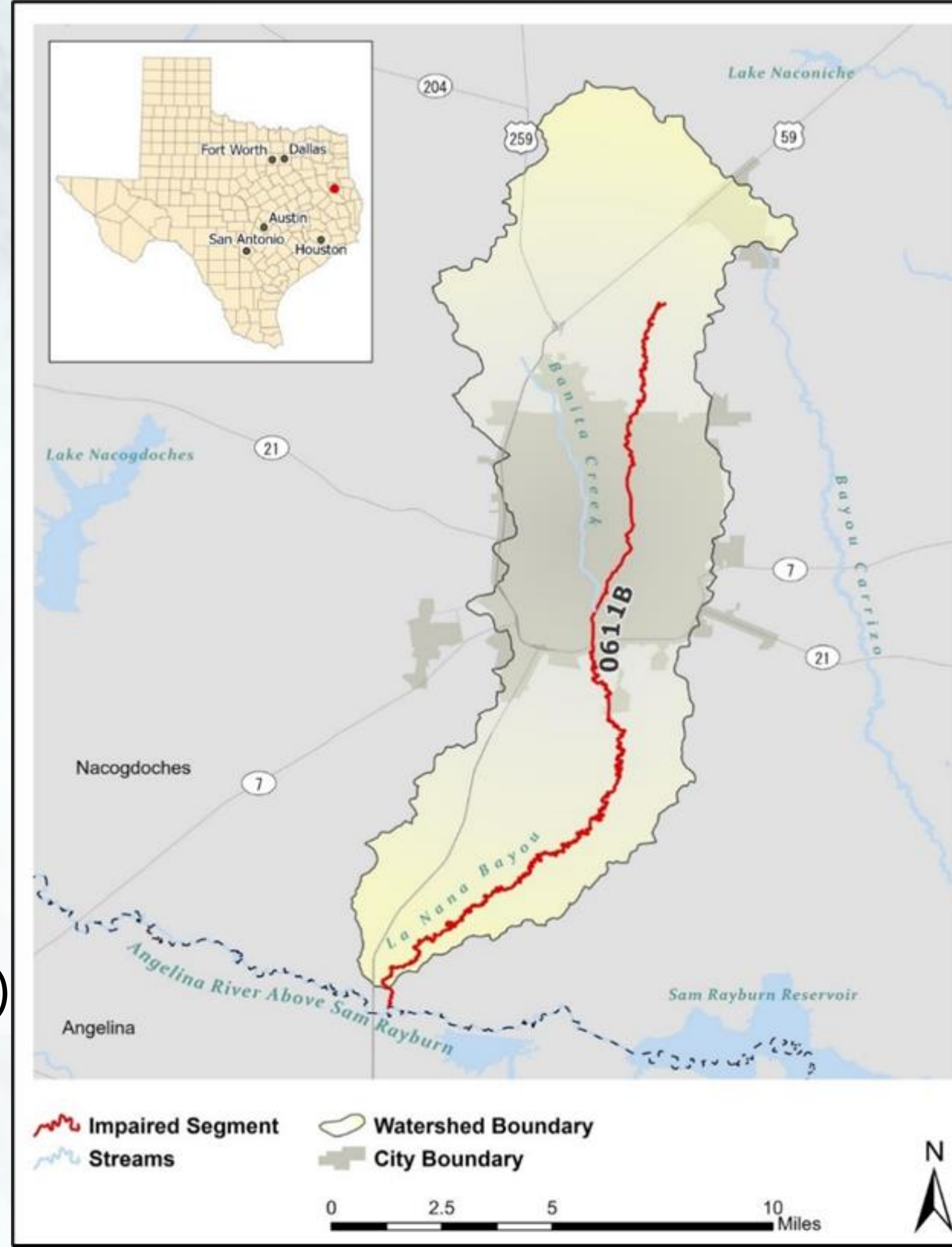
- Continued surface water quality monitoring
- Adaptive outreach and education strategies
- Connecting with stakeholders on current and future WPP Implementation
- Hydrologic modeling for location analysis for BMPs

La Nana Bayou Watershed Protection Plan Implementation – Surface Water Quality Monitoring

Project location: La Nana Bayou watershed within the City of Nacogdoches and Nacogdoches County

Bacteria impairments: La Nana Bayou (Segments 0611B_01, 0611B_02, 0611B_03)

Nutrient Concerns: Nitrates, Total P – La Nana Bayou (Segments 0611B_02, 0611B_03)



La Nana Bayou Watershed Protection Plan Implementation – Surface Water Quality Monitoring by ANRA

Supporting monitoring, intended to support existing CRP monitoring:

Quarterly monitoring to be conducted by ANRA staff (to include ammonia-N, nitrate-N, nitrite-N, Total P, Total Suspended Solids, Total, Chloride, Sulfate, and E. coli):

- 10474 – La Nana Bayou at Nacogdoches CR 526
- 16301 – La Nana Bayou at Loop 224
- 20792 – La Nana Bayou upstream of Main Street
- 22447 – Banita Creek upstream of MLK Jr Boulevard

Questions?

Texas Water Resources Institute

- www.twri.tamu.edu
- Alexander Neal,
Program Specialist II:
[alexander.neal@
ag.tamu.edu](mailto:alexander.neal@ag.tamu.edu)





SUBSCRIBE

STAY CONNECTED!

Follow us on social media:



@txwri



@tx_wri



linkedin.com/company/txwri

Stay up to date on the latest information for programs, events and opportunities you can get involved in!

twri.tamu.edu/subscribe