

Current Status of the Texas Integrated Report (IR) for Clean Water Act Sections 305(b) and 303(d)

Surface Water Quality Monitoring Program (SWQM)

Upper Neches Basin Steering Committee Meeting

May 23, 2016

Background

- Statewide assessment of the status of state waters
 - Compares water quality data to approved water quality standards
 - Identifies impaired waters (303(d) List)
- Requirements
 - Federal Clean Water Act, Sections 305(b) and 303(d)
 - Title 30 of the Texas Administrative Code (30 TAC)
- Conducted every two years
 - Assessment includes a seven-year timeframe
 - Draft due to EPA on April 1 of even numbered years

Integrated Report (IR) - Process

- Develop Guidance
- Assemble\Compile Data
- Update Assessment Tools
- Develop Draft Reports
- Solicit Public Comment
- Revise Draft Documents
- TCEQ Approval
- EPA Approval – IR considered draft until approved by EPA

Integrated Report Documents

- Executive Summary
- Guidance for Assessing and Reporting Surface Water Quality in Texas
- 303(d) List (Category 5)
- Delistings
- New Listings
- Schedule to Develop TMDLs for Category 5a Water Bodies
- Water Quality Concerns
- Sources of Pollution for Impairments and Concerns
- Public Comment and Response
- Water Body Assessments by River Basin
- Cost/Benefit Assessment
- Trophic Assessment of Texas Reservoirs

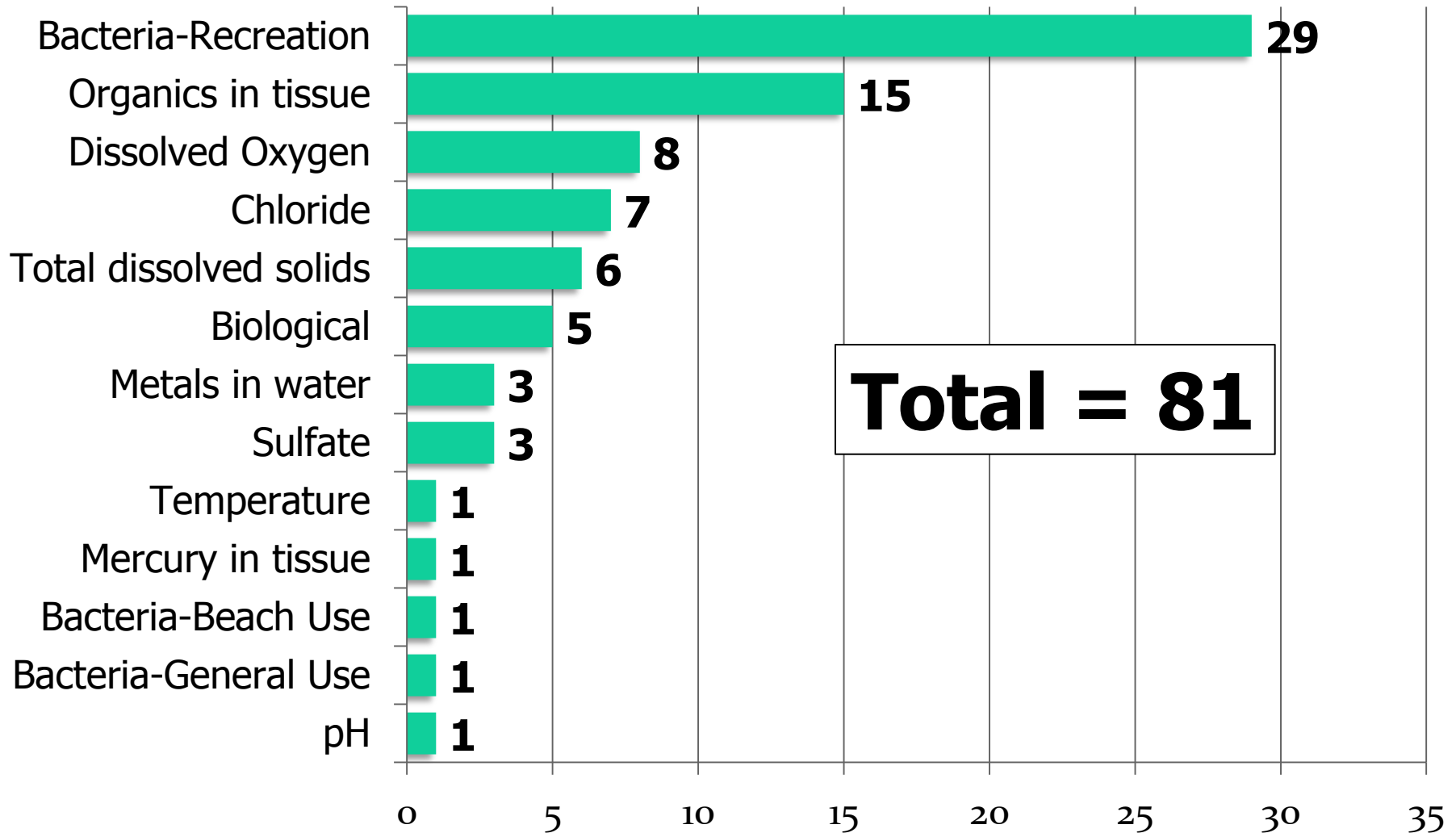
Integrated Report Documents (cont)

- Electronic data files summarizing the assessment results for EPA's Assessment Database
- Index of Water Quality Impairments
- Water Bodies Evaluated
- Five-part categorization of waters
- Changes to the Draft Following Public Comments
- Water Pollution Control Program
- Monitoring Program
- Statistically-Based Monitoring in Texas
- Water Quality Inventory Summary of Uses
- Texas Groundwater Assessment

2014 Integrated Report Status

- Adopted by TCEQ Commission – June 3, 2015
- Submitted to EPA July 15, 2015
- Approved by EPA November 19, 2015

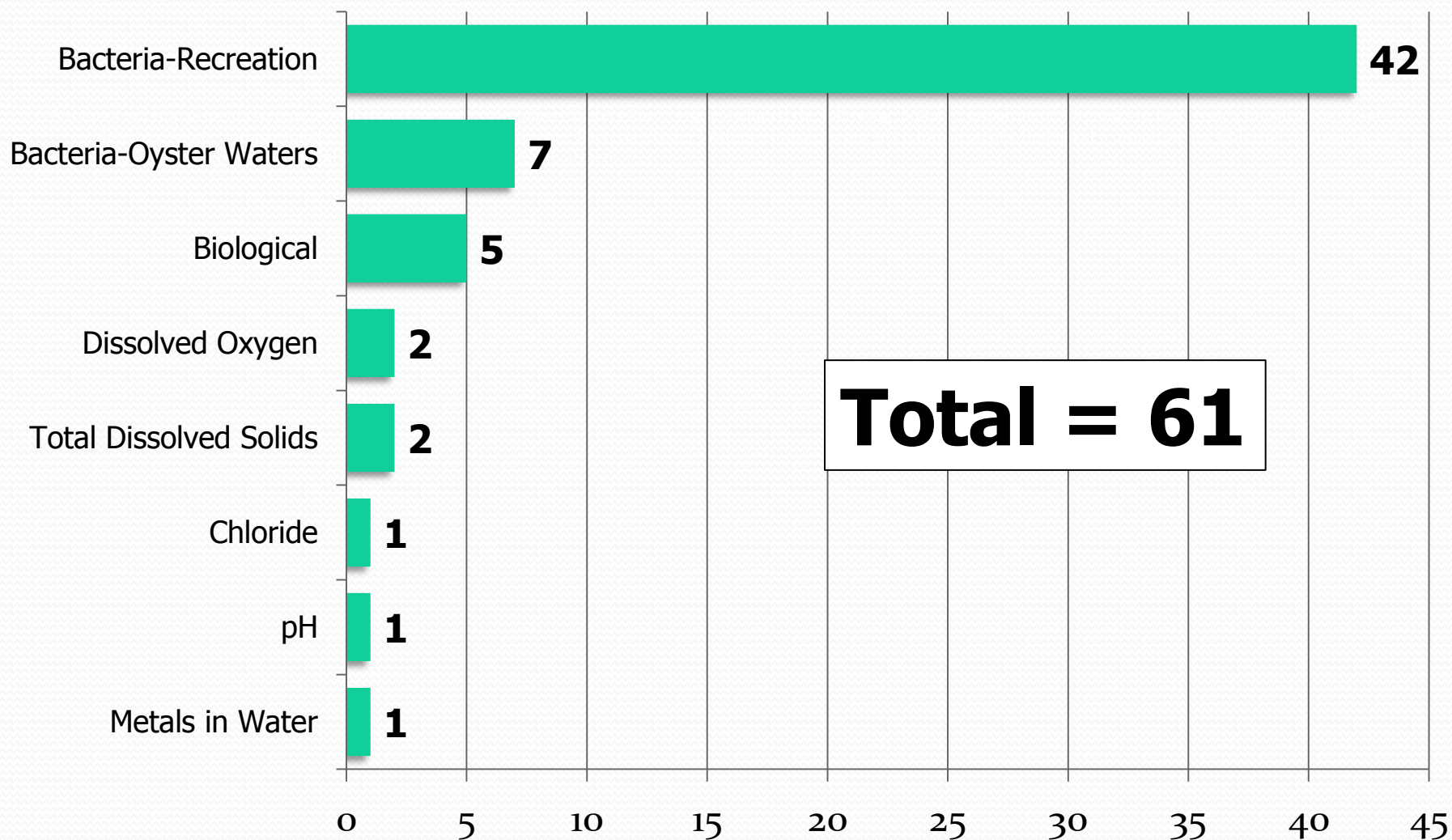
2014 New Impairments (statewide)



2014 New Impairments in the Neches Basin

SegID	Segment Name	Parameter	Category
0609	Angelina River Below Sam Rayburn Reservoir	mercury in edible tissue	5c
0609	Angelina River Below Sam Rayburn Reservoir	dioxin in edible tissue	5c
0610	Sam Rayburn Reservoir	dioxin in edible tissue	5c
0615	Angelina River/Sam Rayburn Reservoir	dioxin in edible tissue	5c
0602	Neches River Below B. A. Steinhagen Lake	dioxin in edible tissue	5c
0603	B. A. Steinhagen Lake	dioxin in edible tissue	5c
0604	Neches River Below Lake Palestine	dioxin in edible tissue	5c
0608A	Beech Creek	copper in water	5c

2014 Delistings (statewide)



2014 Delistings in the Neches Basin

SegID: 0604C **Jack Creek (unclassified water body)**
 From the confluence of Cedar Creek southwest of Lufkin in Angelina County to the upstream perennial portion of the stream in northeast Lufkin in Angelina County

<i>Parameters</i>	<i>Area</i>	<i>Reason Code</i>	<i>Type Delist</i>	<i>Parameter Category</i>		<i>Additional Information</i>
				<i>Previous</i>	<i>Current</i>	
bacteria 0604C_01	From the confluence with Cedar Creek (0604A) upstream to confluence with unnamed tributary 1.6km SW of US Hwy 69 NW of Lufkin at NHD RC 12020002012470.	Meets	Complete	5b		Meets standard

SegID: 0604M **Biloxi Creek (unclassified water body)**
 From the confluence with the Neches River southeast of Diboll to FM 325 east of Lufkin in Angelina County

<i>Parameters</i>	<i>Area</i>	<i>Reason Code</i>	<i>Type Delist</i>	<i>Parameter Category</i>		<i>Additional Information</i>
				<i>Previous</i>	<i>Current</i>	
bacteria 0604M_02	From the confluence with Neches River (0604) upstream to confluence with One Eye Creek in Angelina County SE of Lufkin.	Meets	Area	5b		Meets standard

SegID: 0611 **Angelina River Above Sam Rayburn Reservoir**
 From the aqueduct crossing 1.0 kilometer (0.6 mile) upstream of the confluence of Paper Mill Creek in Angelina/Nacogdoches County to the confluence of Barnhardt Creek and Mill Creek at FM 225 in Rusk County

<i>Parameters</i>	<i>Area</i>	<i>Reason Code</i>	<i>Type Delist</i>	<i>Parameter Category</i>		<i>Additional Information</i>
				<i>Previous</i>	<i>Current</i>	
bacteria 0611_03	From a point immediately upstream of the confluence with Mud Creek (0611C) upstream to the confluence with East Fork Angelina River (0611A)	Meets	Area	5c		Meets standard

Segments Added and Removed from 2014 303(d) List







Protecting Texas by
Reducing and
Preventing Pollution

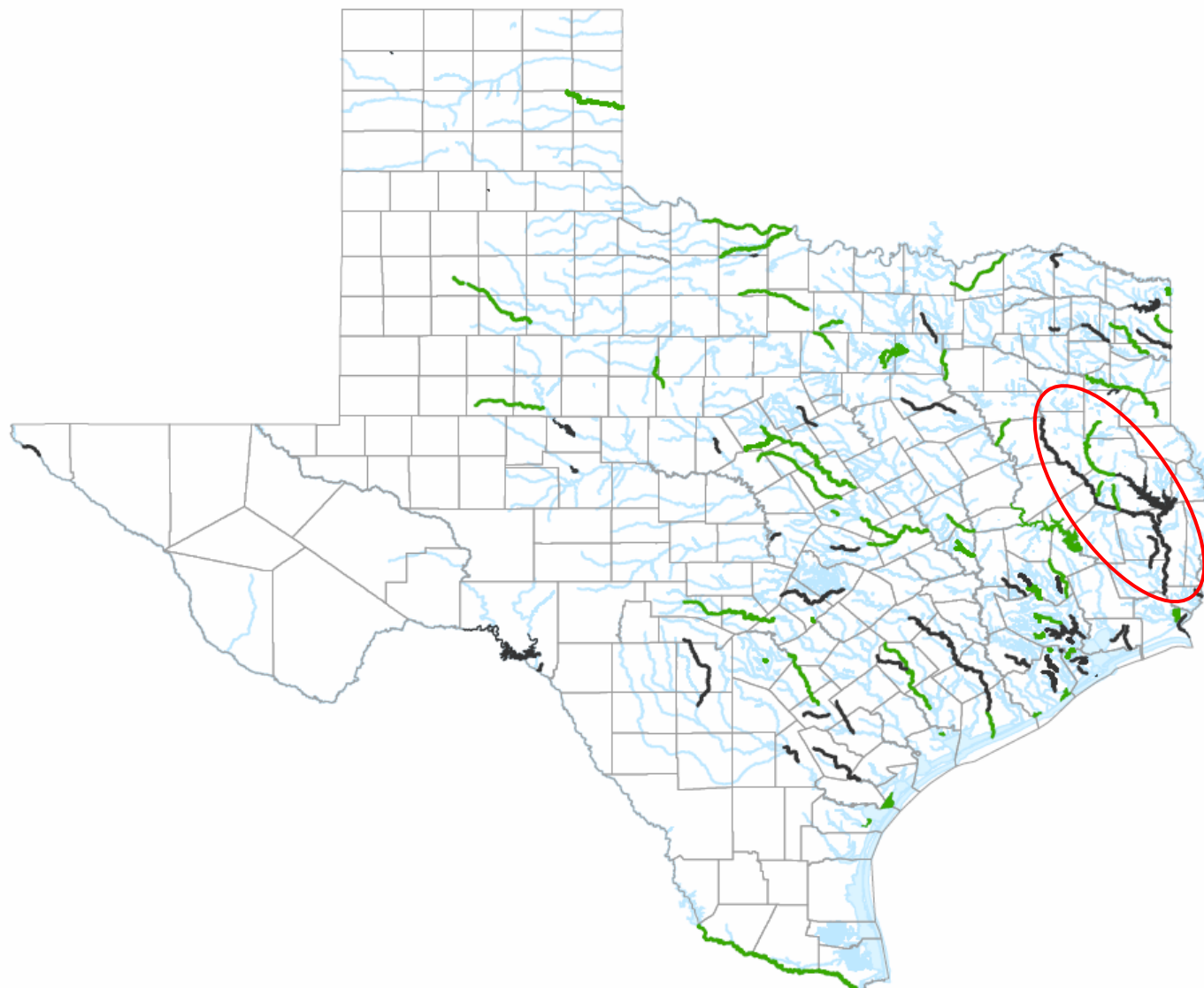
Texas Commission on Environmental Quality
Surface Water Quality Monitoring Program
Mail Code 165
Post Office Box 13087
Austin, Texas 78711-3087

0 45 90 180 Miles
0 65,000 130,000 260,000 Meters

Texas Statewide Mapping System (TSMS) Projection

Legend

-  Segments Removed
-  Segments Added
-  All Segments
-  County Boundaries



Map Created on June 3, 2015

This map was edited by the Surface Water Quality Monitoring Team of the Texas Commission on Environmental Quality. No claims are made to the accuracy or completeness of the data or to its suitability for a particular use. For more information concerning this map, contact Daniele Baker, SWQM Program, at (512) 239-1740 or send an e-mail to Daniele.Baker@tceq.texas.gov

2016 Integrated Report Status

- Guidance Advisory Workgroup – July 27, 2015
- Data Provider Review – February 1 – March 2, 2016

Proposed

- Public Comment Period – summer 2016

2016 Integrated Report Updates

- Nutrient Assessment Methods
- Updated\Revised Water Quality Standards
- Drought Assessment Procedures

<https://www.tceq.texas.gov/waterquality/planning/assessment/swqmgawg.html/>

Additional Information

- 2014 Integrated Report
 - <https://www.tceq.texas.gov/waterquality/assessment/14twqi/14txir>
- Lauren Pulliam, SWQM Team
 - Lauren.Pulliam@tceq.texas.gov
 - (512) 239-4597